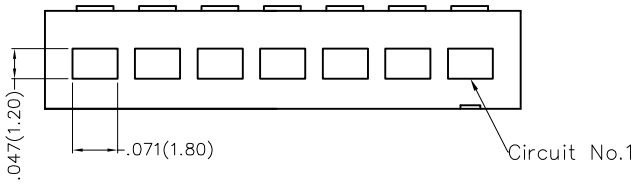
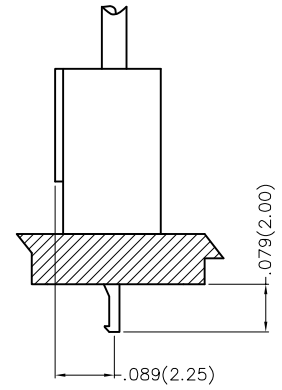
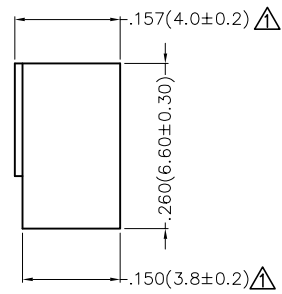
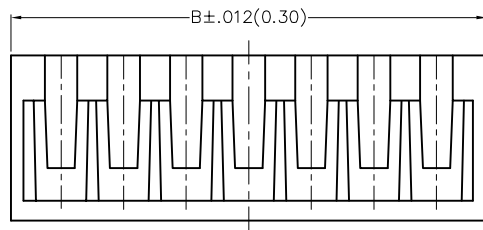
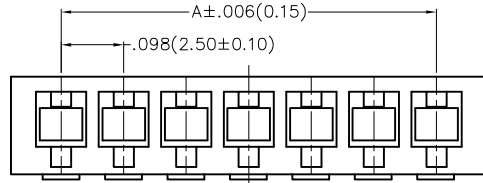


REV	LOCATIONS	DESCRIPTION	DATE	REVISER	APPD
1	△	Change dimension	23/MAY/23	MATT	LEO

Electrical
 Temperature Range—Operating: -25°C~+85°C
 Material
 Housing: PA66(UL 94V-0)
 Applicable Terminal: FT25008-M



Ordering Information

FHG 250 09 — S XX M 2 W1 B
 1 2 3 4 5 6 7 8 9

1	Category FHG—Housing	2	Series Number 250—Pitch2.50mm	3	Distinction No. 09	4	Row Option Single Row	5	Circuits XX
6	Entry Type M—Male	7	Material—Resin 2—PA66	8	Color—Resin W1—White	9	Packaging B—PE Bag		

 THIRD ANGLE PROJECTION	GENERAL TOLERANCES (UNLESS SPECIFIED)		APPROVE BY FRANK	DATE 11/OCT/13	PART NO. FHG25009—SXXM2W1B	ITEM NO. FHG25009	 Leader Of Industry	
	DESIGN UNITS Inch (metric)	X.±.012(0.30) X.X±.008(0.20)	X.±5° .X'±2°	CHECKED BY FAN	DATE 11/OCT/13	TITLE Wire to Board Pitch 2.50mm(Housing)		REV 1
SCALE 5:1	SIZE A4	X.XX±.006(0.15) X.XXX±.004(0.10)	.XX'±1° .XXX'±0.5°	DRAWN BY CHERRY	DATE 11/OCT/13	THIS DRAWING CONTAINS INFORMATION THAT IS PROPRIETARY TO TXGA INDUSTRIAL ELECTRONICS(S.Z)CO.,LTD AND SHOULD NOT BE USED WITHOUT WRITTEN PERMISSION		

1 2 3 4 5 6 7 8

REV	LOCATIONS	DESCRIPTION	DATE	REVISER	APPD

A

A

B

B

C

C

D

D



E

E

F

F

Circuits (n)	Part No.	Dimensions(in/mm)		Circuits (n)	Part No.	Dimensions(in/mm)	
		A	B			A	B
2	FHG25009-S02M2W1B	.098(2.50)	.256(6.50)	10	FHG25009-S10M2W1B	.886(22.50)	1.043(26.50)
3	FHG25009-S03M2W1B	.197(5.00)	.354(9.00)	11	FHG25009-S11M2W1B	.984(25.00)	1.142(29.00)
4	FHG25009-S04M2W1B	.295(7.50)	.453(11.50)	12	FHG25009-S12M2W1B	1.083(27.50)	1.240(31.50)
5	FHG25009-S05M2W1B	.394(10.00)	.551(14.00)	13	FHG25009-S13M2W1B	1.181(30.00)	1.339(34.00)
6	FHG25009-S06M2W1B	.492(12.50)	.650(16.50)	14	FHG25009-S14M2W1B	1.280(32.50)	1.437(36.50)
7	FHG25009-S07M2W1B	.591(15.00)	.748(19.00)	15	FHG25009-S15M2W1B	1.378(35.00)	1.535(39.00)
8	FHG25009-S08M2W1B	.689(17.50)	.846(21.50)	16	FHG25009-S16M2W1B	1.476(37.50)	1.634(41.50)
9	FHG25009-S09M2W1B	.787(20.00)	.945(24.00)				

 THIRD ANGLE PROJECTION	GENERAL TOLERANCES (UNLESS SPECIFIED)		APPROVE BY FRANK	DATE 11/OCT/13	PART NO. FHG25009-SXXM2W1B	ITEM NO. FHG25009	 Leader Of Industry	
	DESIGN UNITS Inch (metric)	$X \pm .012(0.30)$ $X.X \pm .008(0.20)$ $X.XX \pm .006(0.15)$ $X.XXX \pm .004(0.10)$	$X \pm 1^\circ$ $.X \pm 2^\circ$ $.XX \pm 1^\circ$ $.XXX \pm 0.5^\circ$	CHECKED BY FAN	DATE 11/OCT/13	TITLE Wire to Board Pitch 2.50mm(Housing)		
SCALE 5:1	SIZE A4	DRAWN BY CHERRY		DATE 11/OCT/13	THIS DRAWING CONTAINS INFORMATION THAT IS PROPRIETARY TO TXGA INDUSTRIAL ELECTRONICS(S.Z)CO.,LTD AND SHOULD NOT BE USED WITHOUT WRITTEN PERMISSION		REV 1	SHEET NO. 2/2

1 2 3 4 5 6 7 8